



ESnet Orchestration and Core Data

Using Workflow Orchestrator with NSO



Scott Richmond

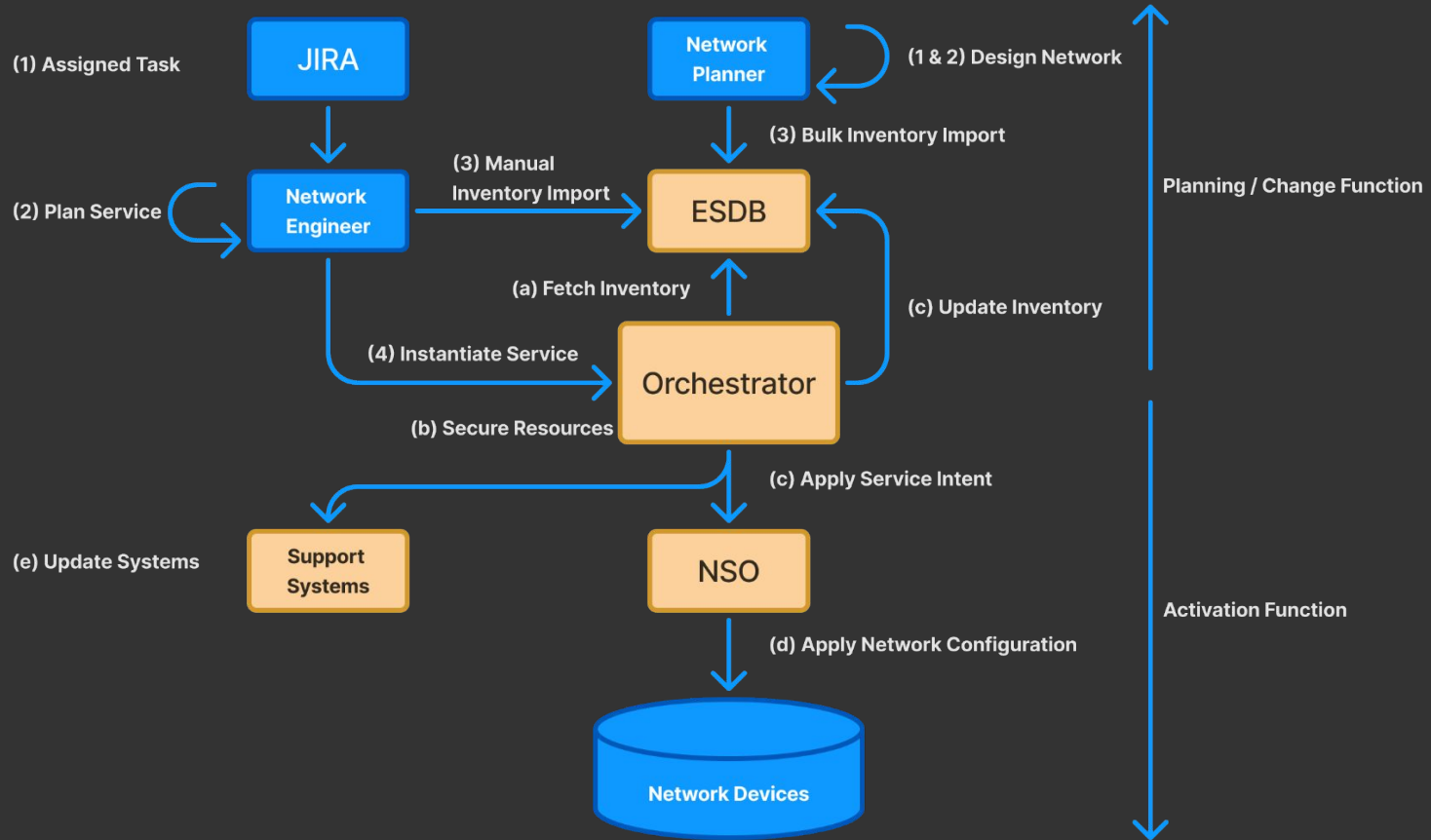
Orchestration and Core Data Group Lead

Overview

- ESnet's Automation Process
- ESnet's Automation Architecture
- Live Demo

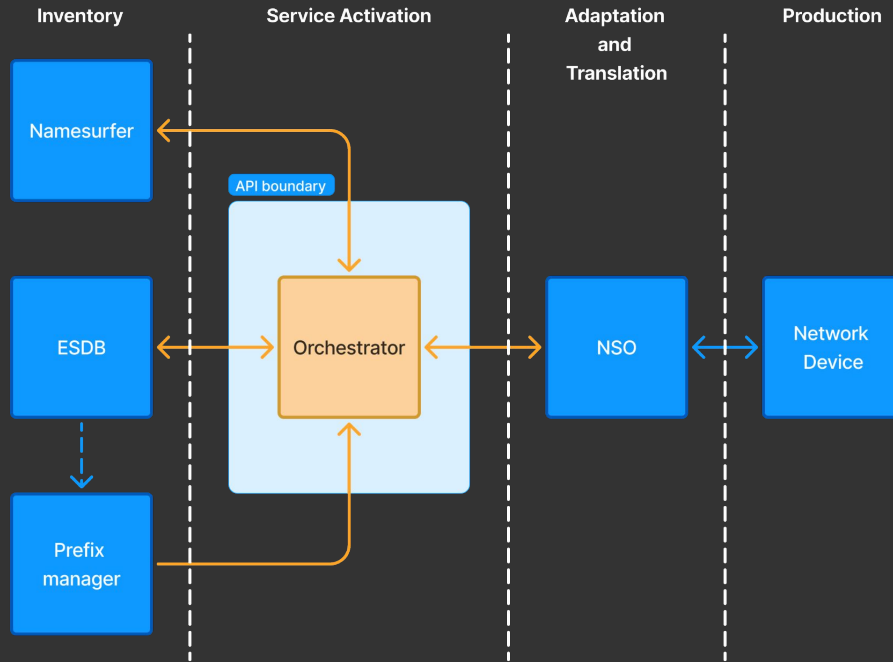
ESnet Process

ESnet Provisioning Workflow



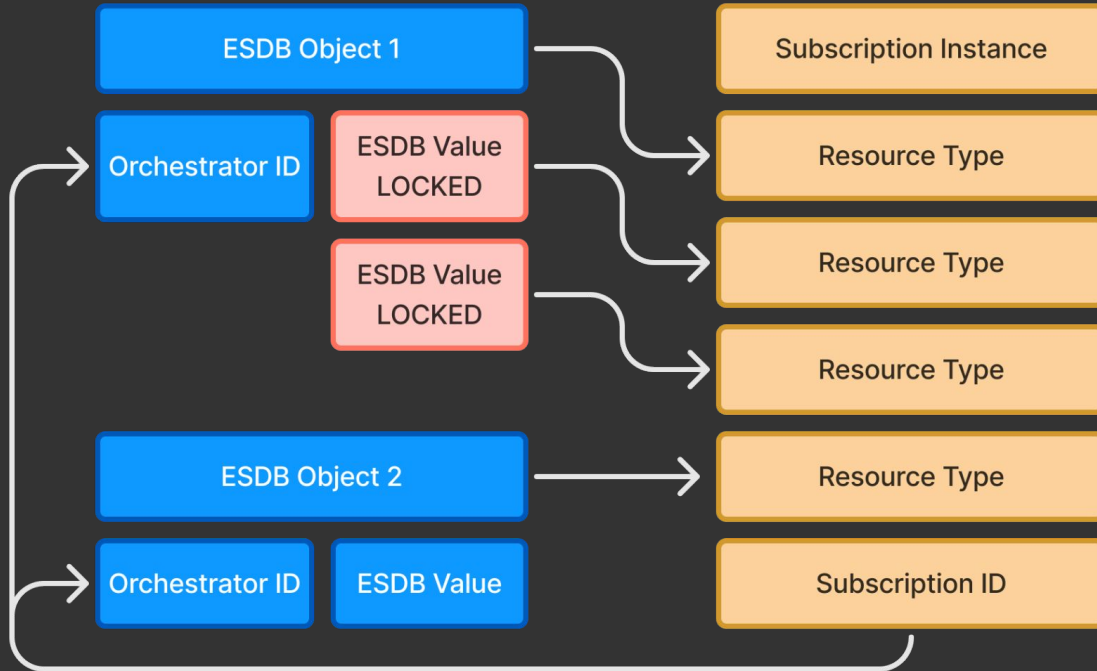
ESnet Architecture

Information Data Flow



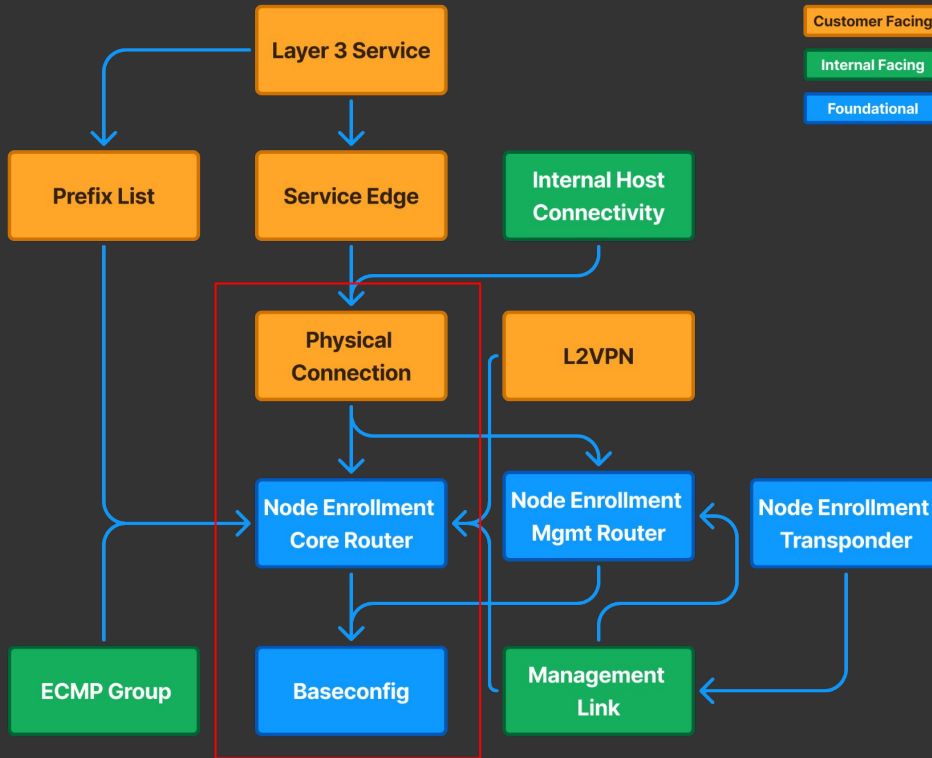
- Inventory is passed to Orchestrator
- Orchestrator Activates services using workflows
- NSO translates service data into device specific network config
- Orchestrator writes back to Inventory, locking resources in use

Resource Locking



- Subscription Instances store references to SoT object IDs at a minimum
- Some references may be values such as strings or integers from those objects
- Subscription IDs are written back to SoT objects
- SoT objects with Subscription IDs are “Locked” and no longer available to be used in a new subscription until released

ESnet's Product Suite



- Products depend on other Products
- Dependencies can block actions, such as modifications or terminations
- Implicit order of operations to Subscription creation

Demo

Service Containers



Each service container is connected to the OOB management interface of the network elements.

cr6 devices are Nokia vSIMs running 20.10R5
mpr1 devices are experimental vQFXs running 18.4
customer/(nsp/host) devices are running SR-Linux:latest

