

Standards and Badges Update

TF-EDU

TNC24

Xavi Aracil - 1EdTech

June 10, 2024

tnc24

RENDEZVOUS À RENNES
Rennes, France | **10-14 JUNE 2024**



Co-funded by
the European Union

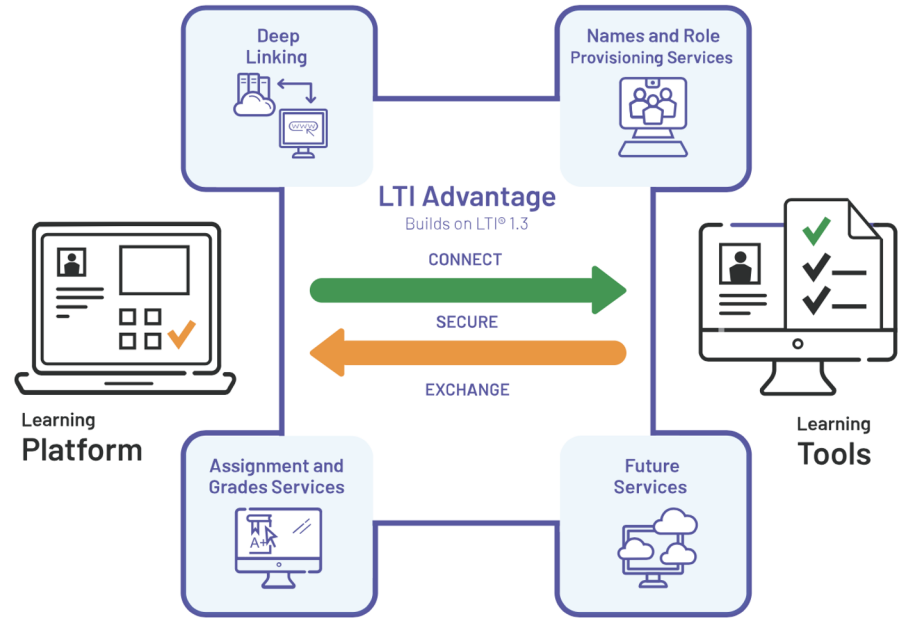


STANDARDS UPDATE



Learning Tools Interoperability (LTI)® Advantage

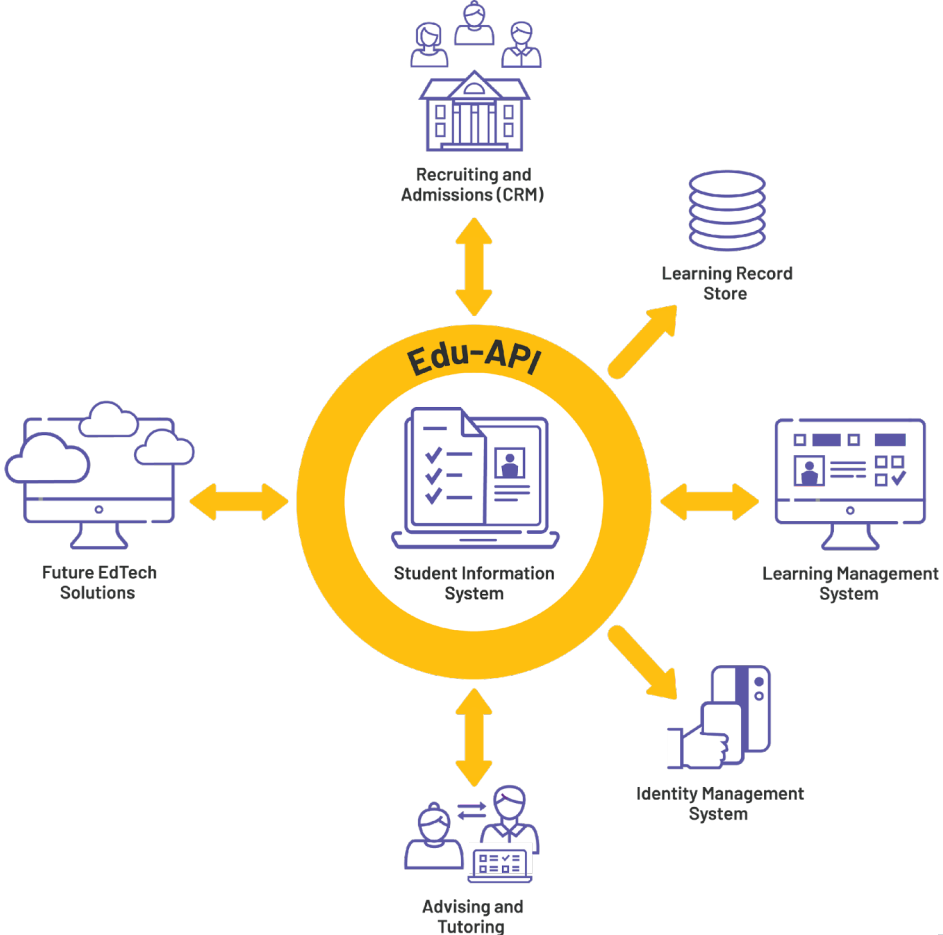
- ❖ LTI 1.3 Core
 - IMS Security Framework
- ❖ LTI Extensions
 - LTI Deep Linking
 - LTI Names & Role Service
 - LTI Assignment and Grade Ser



Next Generation LTI Advantage

- ❖ Cookie Problem Resolution
- ❖ Dynamic Registration 1.0
- ❖ Caliper Analytics Connector 1.0
- ❖ Course Group Service 1.0
- ❖ Submission Review 1.0
- ❖ Proctoring Service 1.0
- ❖ Data Privacy Launch 1.0
- ❖ LTI Resource Search 1.0
- ❖ Support for Assessment Tools
 - LTI Assessment Tool Best Practices Guide
 - LTI and Personal Needs & Preferences Guide
 - LTI Resource Session Control Guide

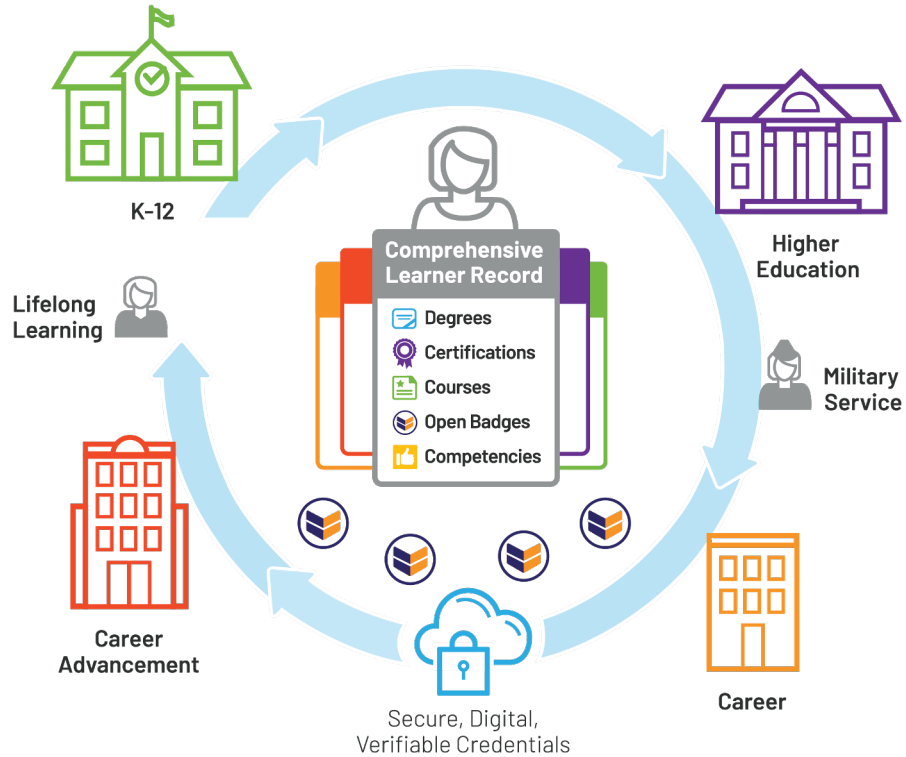
EduAPI



Digital Credentials



Digital Credentials Ecosystem



Open Standards for Learning and Employment Records

Open Badges



Token Representing an Achievement

Comprehensive Learner Record (CLR)



Longitudinal Record of Achievements and Milestones

CASE



Publish and Relate Skills

1Edtech Open Standards Enable an Interoperable Ecosystem

Specifications



Open Badges 3.0

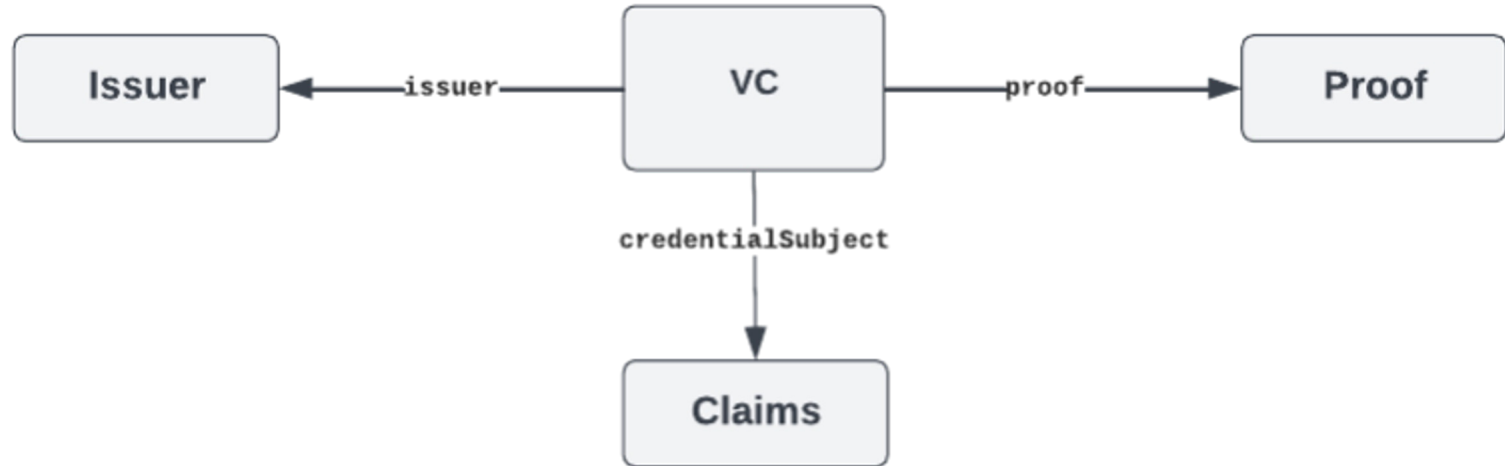
<http://www.imsglobal.org/spec/ob/v3p0>



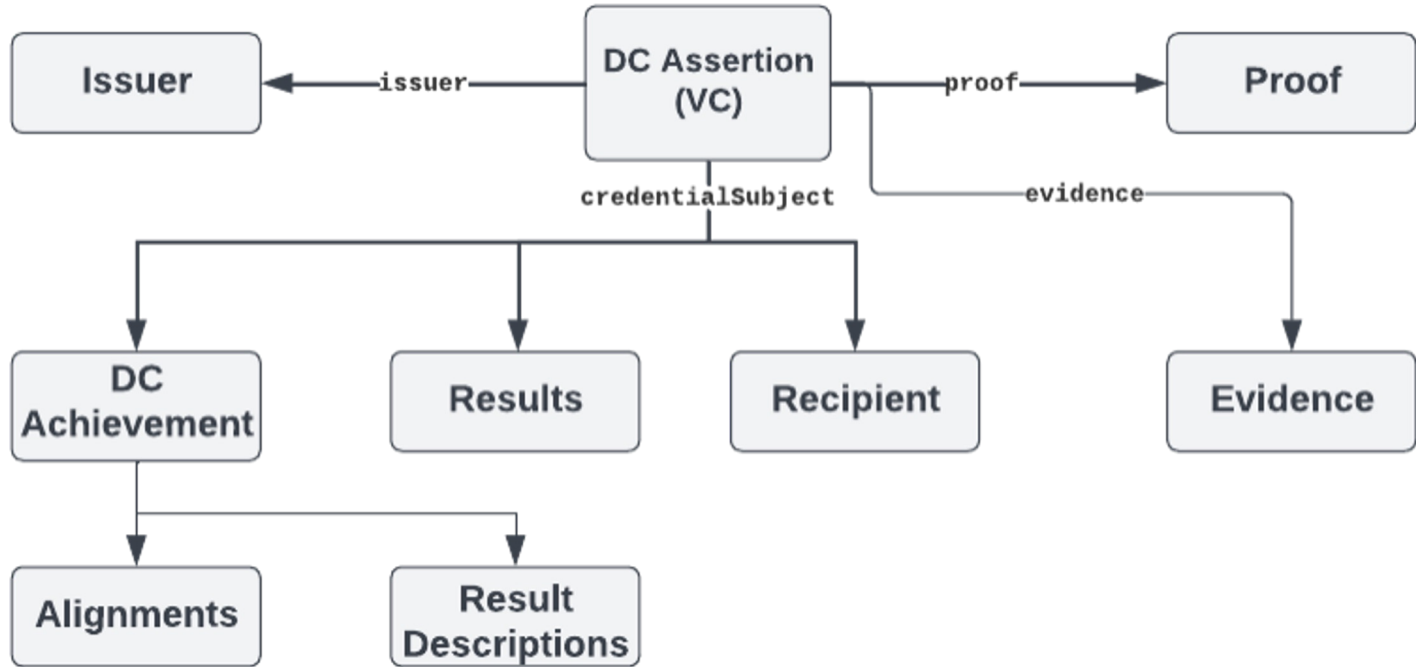
Comprehensive Learner Record 2.0

<https://www.imsglobal.org/spec/clr/v2p0>

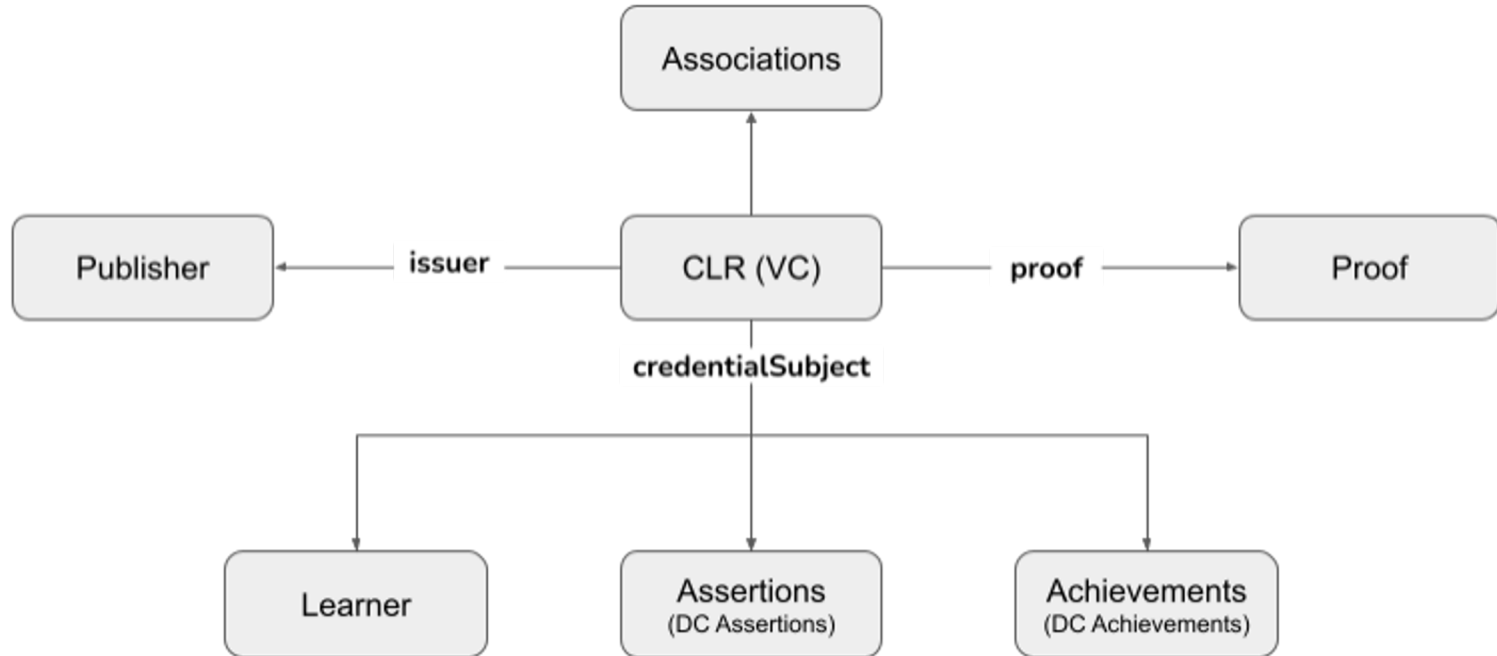
Verifiable Credential



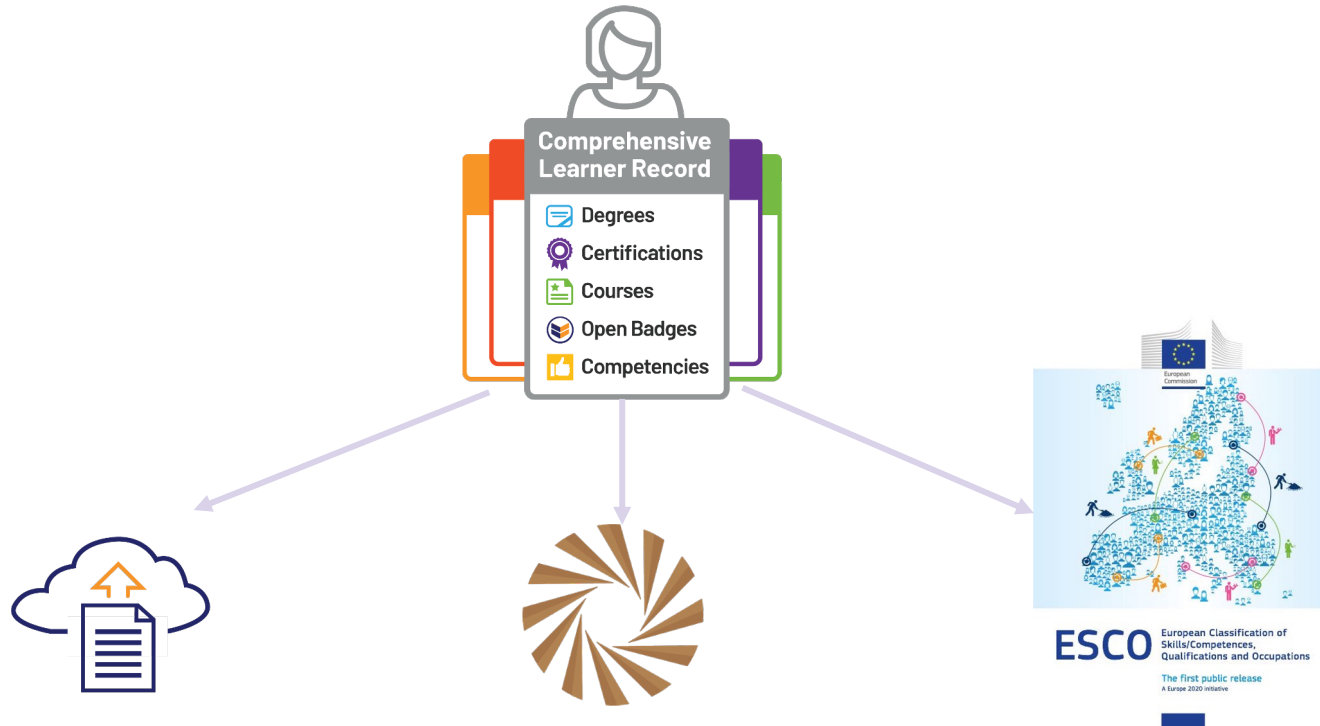
Open Badges 3.0



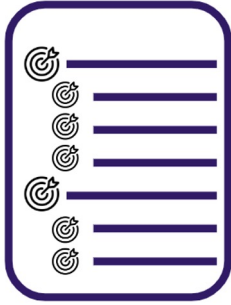
Comprehensive Learner Record 2.0



Alignments



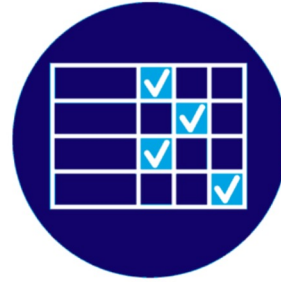
Competencies and Academic Standards Exchange



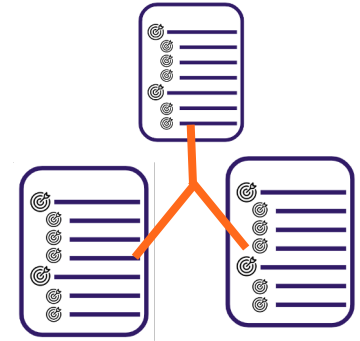
CASE Framework
A hierarchical document
with learning objectives



CASE Framework
Item
Each individual
academic objective

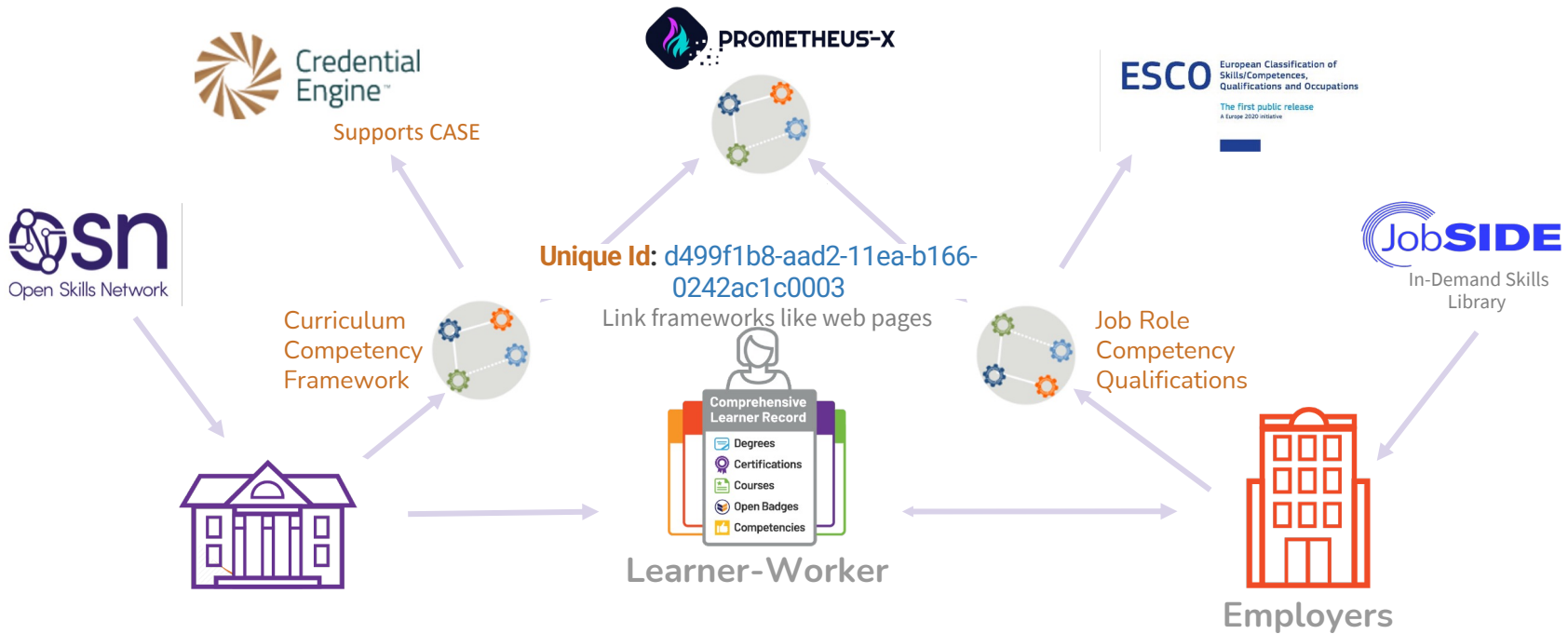


Rubrics to identify the
depth of knowledge
for each standard



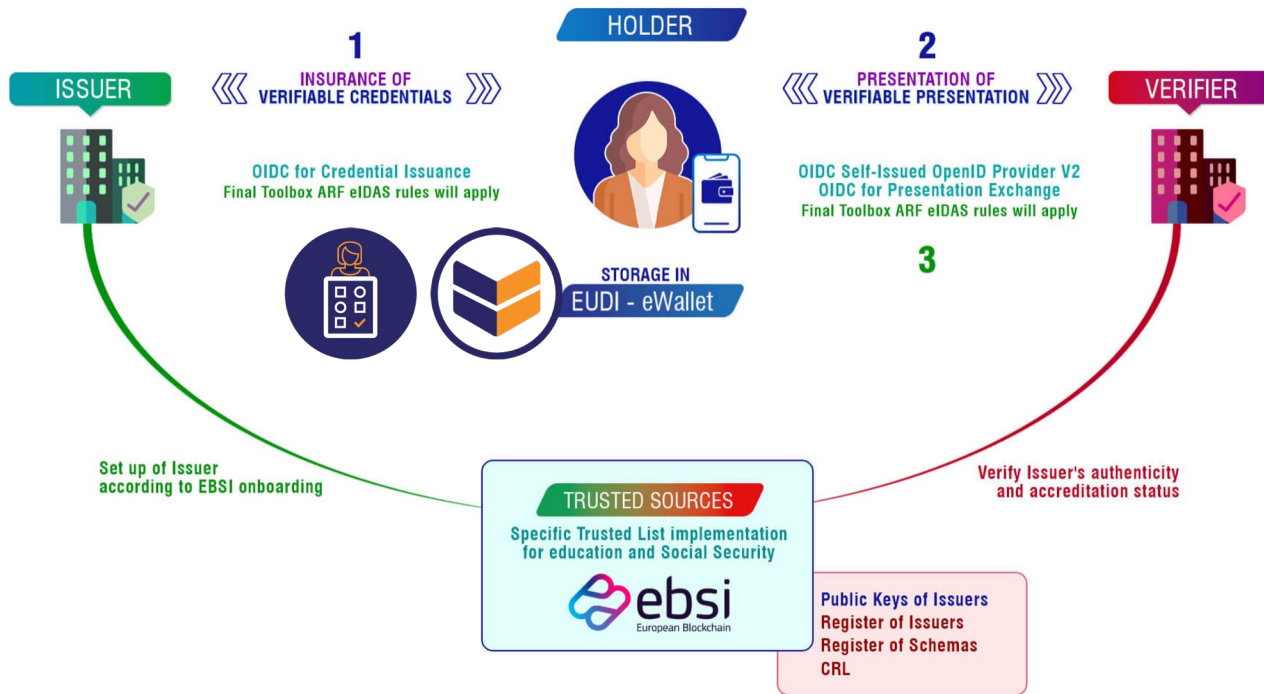
Associations (crosswalks)
to other standards or other
documents

CASE Connects an Expanding Credentials Ecosystem



European Landscape





<https://www.dc4eu.eu/>

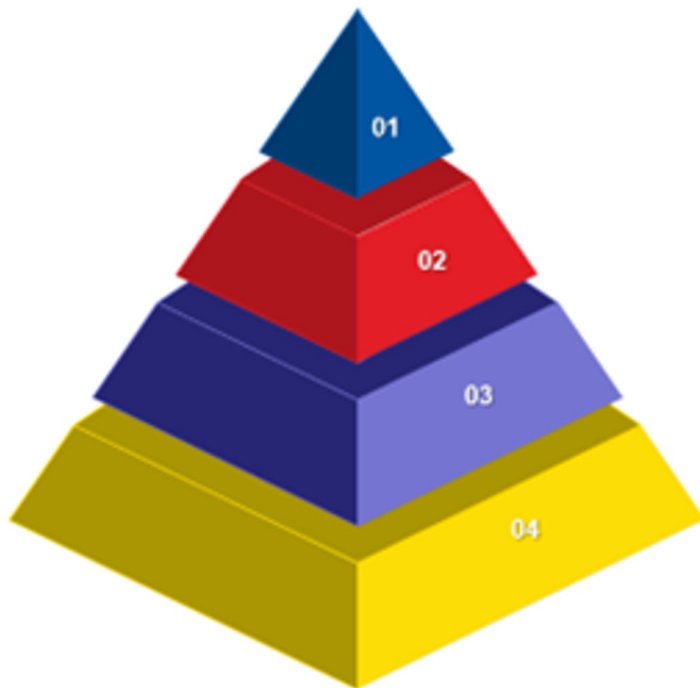
ELM

01 European Information Model

Definitions and Standards in EQF
Recommendation, Diploma Supplement,
Europass Decision, etc. supplemented by
glossaries for additional terms

03 Application Profiles

Specific sets of rules for publishing
learning opportunities, qualifications,
accreditations and credentials in
Europass



02 European Learning Model

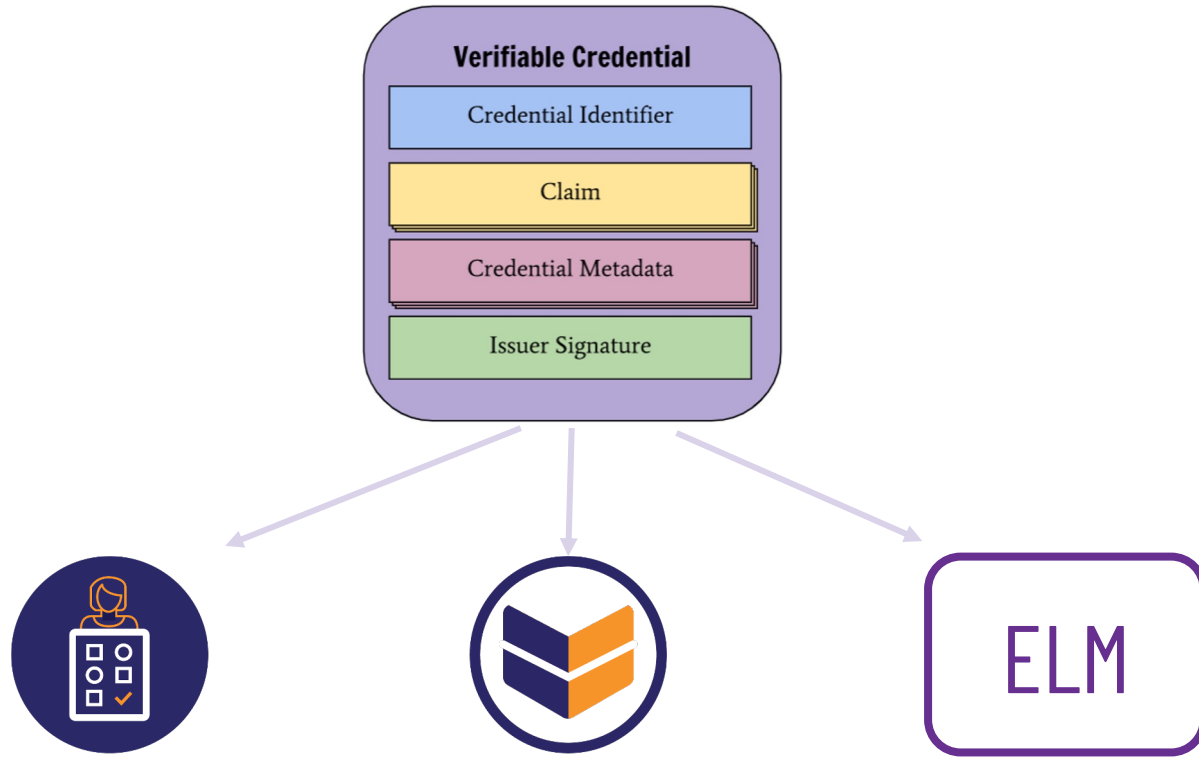
A Linked Open Data publication of
concepts to be used in educational and
employment use cases throughout
Europe

04 Extensions

National, Regional or Sectoral
extensions of the data model &
application profiles to deal with specific
use cases

<https://europass.europa.eu/en/node/2128>

ELM & OB - CLR



Thank you
Any questions?

xaracil@1edtech.org

tnc24

RENDEZVOUS À RENNES
Rennes, France | 10-14 JUNE 2024



Co-funded by
the European Union

