

Trust & Identity Incubator Status notifications activity

Uros Stevanovic

Sprint Demo, 2019-12-17

Public

www.geant.org



Overview

- Several tools reporting the status of the eduGAIN metadata:
 - Quality of the metadata (contacts, urls, etc)
 - Connection status of SPs and IdPs
 - Entity categories
 - Attribute checks (live interaction)
- Current tools (mostly relying on the eduGAIN metadata itself)
 - CoCo monitor
 - ECCS (eduGAIN Connectivity Check Service)
- Status intake is considered lackluster:
 - Data is not always readily available
 - Somewhat tedious to “sift” through the data
 - Irregular checks
- No automated notifications

Show SPs with status: green white yellow red [Show all records](#)

entityID	registrationAuthority	DisplayName	First seen	Last seen	CoCo found	Status	Comment	PrivacyStatementURL	Status code	Status text	Con typ
SP data					Last test results						
				Last 30 days ▼	Yes ▼	All ▼					
http://dev-us.cloudmore.com/shibboleth	http://www.swamid.se/	Cloudmore	2017-11-09 03:07:38	2019-12-17 03:10:44	Yes	All attributes present, privacy statement has a...		http://web.cloudmore.com/privacy/cloudmore-...	200	OK	text
http://dev.cloudmore.com/shibboleth	http://www.swamid.se/	Cloudmore	2017-09-15 03:07:33	2019-12-17 03:10:43	Yes	All attributes present, privacy statement has a...		http://web.cloudmore.com/privacy/cloudmore-...	200	OK	text
http://fs.liv.se/adfs/services/trust	http://www.swamid.se/	Linköping University	2014-11-14 03:07:14	2019-12-17 03:10:37	Yes	All attributes present, privacy statement has a...		https://lu.selen/article/policy-for-handtering-av-...	200	OK	text
http://fse.eduni.fi/adfs/services/trust	http://www.csc.fi/haka	Eduuni	2015-04-22 03:13:20	2019-12-17 03:10:30	Yes	All attributes present, privacy statement has a...		https://wiki.eduni.fi/display/info/Eduuni+Priva-...	200	OK	text
http://local.cloudmore.com/shibboleth	http://www.swamid.se/	Cloudmore	2017-09-15 03:07:33	2019-12-17 03:10:44	Yes	All attributes present, privacy statement has a...		http://web.cloudmore.com/privacy/cloudmore-...	200	OK	text
http://prestaging.cloudmore.com/shibboleth	http://www.swamid.se/	Cloudmore	2017-09-15 03:07:31	2019-12-17 03:10:43	Yes	All attributes present, privacy statement has a...		http://web.cloudmore.com/privacy/cloudmore-...	200	OK	text
http://scalgo.com/ssl/wayf	http://www.wayf.dk	SCALGO Live	2018-08-11 03:08:04	2019-12-17 03:10:29	Yes	All attributes present, privacy statement has a...		http://scalgo.com/en-US/privacy-policy	200	OK	text
http://sp.lat.csc.fi	http://www.csc.fi/haka	LAT - Language Archive Tools	2013-10-01 20:35:19	2019-12-17 03:10:30	Yes	All attributes present, privacy statement has a...		https://lat.csc.fi/corpora/info/Lat_Privacy_Poli-...	200	OK	text
http://sp.v51.corpora.uni-hamburg.de	https://www.aai.dfn.de	HZSK - University of Hamburg	2015-05-28 14:30:51	2019-12-17 03:10:59	Yes	All attributes present, privacy statement has a...		https://corpora.uni-hamburg.de/hzsk/en/hrvac-...	200	OK	text
http://staging-us.cloudmore.com/shibboleth	http://www.swamid.se/	Cloudmore	2017-11-09 03:07:38	2019-12-17 03:10:44	Yes	All attributes present, privacy statement has a...		http://web.cloudmore.com/privacy/cloudmore-...	200	OK	text
http://staging.cloudmore.com/shibboleth	http://www.swamid.se/	Cloudmore	2017-09-15 03:07:32	2019-12-17 03:10:43	Yes	All attributes present, privacy statement has a...		http://web.cloudmore.com/privacy/cloudmore-...	200	OK	text
http://sts.edugroepen.nl/adfs/services/trust	http://www.surfconext.nl/	EDUgroepen	2015-04-25 03:41:21	2019-12-17 03:11:24	Yes	All attributes present, privacy statement has a...		https://login.edugroepen.nl/privacy	200	OK	text
http://us.cloudmore.com/shibboleth	http://www.swamid.se/	Cloudmore	2017-11-09 03:07:39	2019-12-17 03:10:45	Yes	All attributes present, privacy statement has a...		http://web.cloudmore.com/privacy/cloudmore-...	200	OK	text
http://www.clarin-pl.eu/shibboleth	https://www.aai.dfn.de	CLARIN-PL repository	2015-06-16 03:11:26	2019-12-17 03:11:00	Yes	All attributes present, privacy statement has a...		http://clarin-pl.eu/en/privacy-policy/	200	OK	text
https://aai.openaire.eu/proxy/module.php/sam-...	https://www.aai.dfn.de	OpenAIRE	2018-03-15 03:12:32	2019-12-17 03:11:23	Yes	All attributes present, privacy statement has a...		https://www.openaire.eu/privacy-policy	200	OK	text
https://acdh.oew.ac.at/shibboleth	https://www.aai.dfn.de	ACDH-OAW Services for Digital Humanities	2018-02-14 03:19:03	2019-12-17 03:11:00	Yes	All attributes present, privacy statement has a...		https://arche.acdh.oew.ac.at/browse/privacy	200	OK	text
https://agenda.ct.infn.it/shibboleth	http://www.idem.garr.it/	Agenda provided by INFN Catania	2015-06-13 03:12:21	2019-11-21 03:13:50	Yes	All attributes present, privacy statement has a...		http://agenda.ct.infn.it/privacy-policy	200	OK	text
https://aai.etas.ee/aai-aaut/saml2/metadata/	http://aai.etas.ee	ETAS Self-service	2017-05-12 03:15:15	2019-12-17 03:09:32	Yes	All attributes present, privacy statement has a...		https://minu.etas.ee/views/policy/privacy-full_...	200	OK	text
https://arche.acdh.oew.ac.at/shibboleth	https://www.aai.dfn.de	ARCHE - A Resource Centre for Humanities	2018-02-14 03:19:03	2019-12-17 03:11:00	Yes	All attributes present, privacy statement has a...		https://arche.acdh.oew.ac.at/browse/privacy	200	OK	text
https://archive.mpi.nl	https://www.aai.dfn.de	MPI-PL Archive	2018-01-30 03:18:13	2019-12-17 03:11:03	Yes	All attributes present, privacy statement has a...		https://sp.mpi.nl/privacy/privacy_statement.html	200	OK	text

Records found: 148

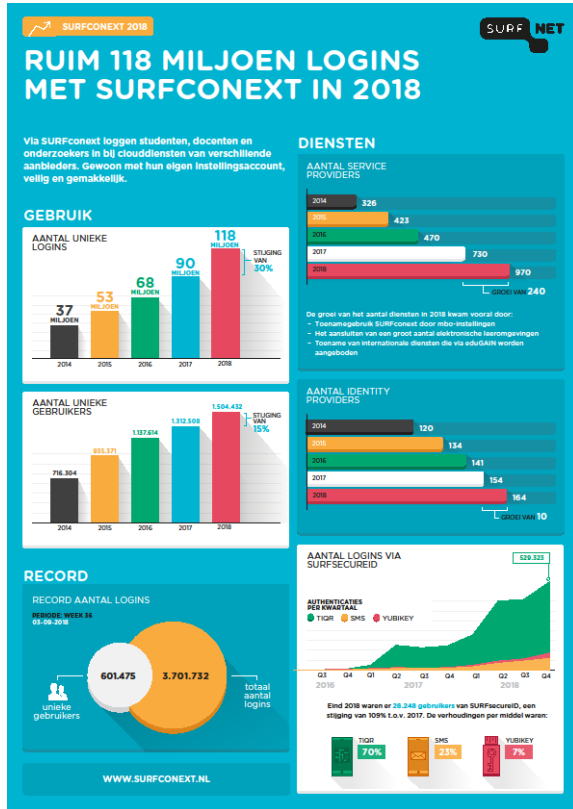
1 2 3 4 5 6 7 8 >

Shanghai Normal University	https://idp-carsi.shnu.edu.cn/idp/shibboleth	https://www.carsi.edu.cn	T: chub@shnu.edu.cn	2019-12-16 04:31:36	No-eduGAIN-Metadata	View
IRCCS Santa Lucia - Roma	https://idp-slucia.irccs.garr.it/idp/shibboleth	http://www.idem.garr.it/	T: idpcloud_service@garr.it S: grant.office@hsantalucia.it	2019-12-16 04:31:36	OK	View
PUCCAMP - Pontificia Universidade Catolica de Campinas	https://idp.puc-campinas.edu.br/idp/shibboleth	http://cafe.rnp.br	T: infra.servidores@puc-campinas.edu.br	2019-12-16 04:31:36	OK	View
HSR - Hospital Sao Rafael S A	https://idpv3-hsr.hsr.com.br/idp/shibboleth	http://cafe.rnp.br	T: marcus.lima@rededor.com.br	2019-12-16 04:31:36	OK	View
FAPCE - Faculdade Paraíso do Ceará	https://shibboleth.fapce.edu.br/idp/shibboleth	http://cafe.rnp.br	T: interatividade@fapce.edu.br	2019-12-16 04:31:35	TCP/IP-Error	View
Vilnius University	https://sso.vu.lt/SSO/saml2/idp/metadata.php	https://fedi.litnet.lt	T: sso-admin@vu.lt	2019-12-16 04:31:35	FORM-Invalid	View
UFFS - Universidade Federal da Fronteira Sul	https://cafe-02.uffs.edu.br/idp/shibboleth	http://cafe.rnp.br	T: diti.diapi@uffs.edu.br	2019-12-16 04:31:33	OK	View
Florida State University	https://idp-staging.fsu.edu	https://incommon.org	T: obegon@fsu.edu T: rhaque@fsu.edu	2019-12-16 04:31:33	FORM-Invalid	View
INMETRO - Instituto Nacional de Metrologia Qualidade e Tecnologia	https://cafe02s.inmetro.gov.br/idp/shibboleth	http://cafe.rnp.br	T: epmatos@inmetro.gov.br	2019-12-16 04:31:33	OK	View
UESC - Universidade Estadual de Santa Cruz	https://shibboleth.uesc.br/idp/shibboleth	http://cafe.rnp.br	T: cmacedo@uesc.br	2019-12-16 04:31:33	OK	View
UNINTA - Centro Universitario NTA	https://shibboleth.uninta.edu.br/idp/shibboleth	http://cafe.rnp.br	T: andersonbarbosa@uninta.edu.br	2019-12-16 04:31:32	HTTP-Error	View

Proposed work

- Process the data
 - Identify and extract the current issues, per entity, per federation
 - Propose solutions for identified issues (if possible)
 - Presentation of the data
- Create a notification system:
 - Emails, tickets, etc?
 - Automated notification

Example of the infographic



- Data per entity
 - E.g. missing contacts, urls
- Data per federation
 - Sirtfi, CoCo, etc.
- General overview

Achievements

- Identify stakeholders, hold initial discussions
 - One more meeting to be scheduled

- Input collected:
 - Be nice
 - Involve federation operators
 - Stick with the “official” data (eduGAIN db)
 - Separation of monitoring (including notification) and visualization

- Questions to be answered:
 - Existing API status (good enough, need improvements, etc.)
 - Notifications (when and whom, configurable)
 - Attribute check?

Status and next steps

✓ Done:

- Identify stakeholders
- Identify source of data

□ Next:

- Finish interviews
- Identify initial data status(es)
- Investigate tools

⊖ Blocker:

- None (so far)

Thank you

Any questions?

www.geant.org

